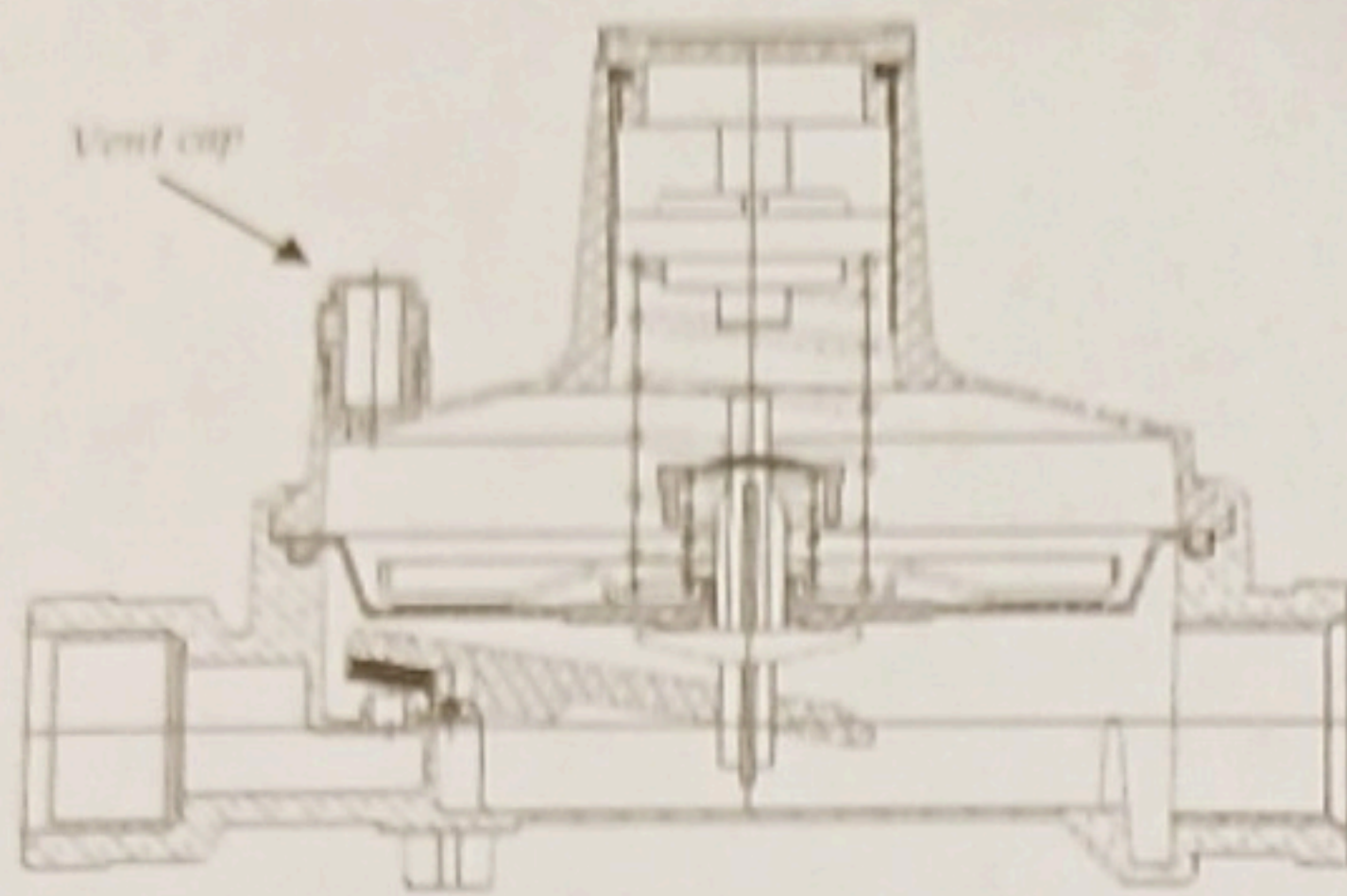


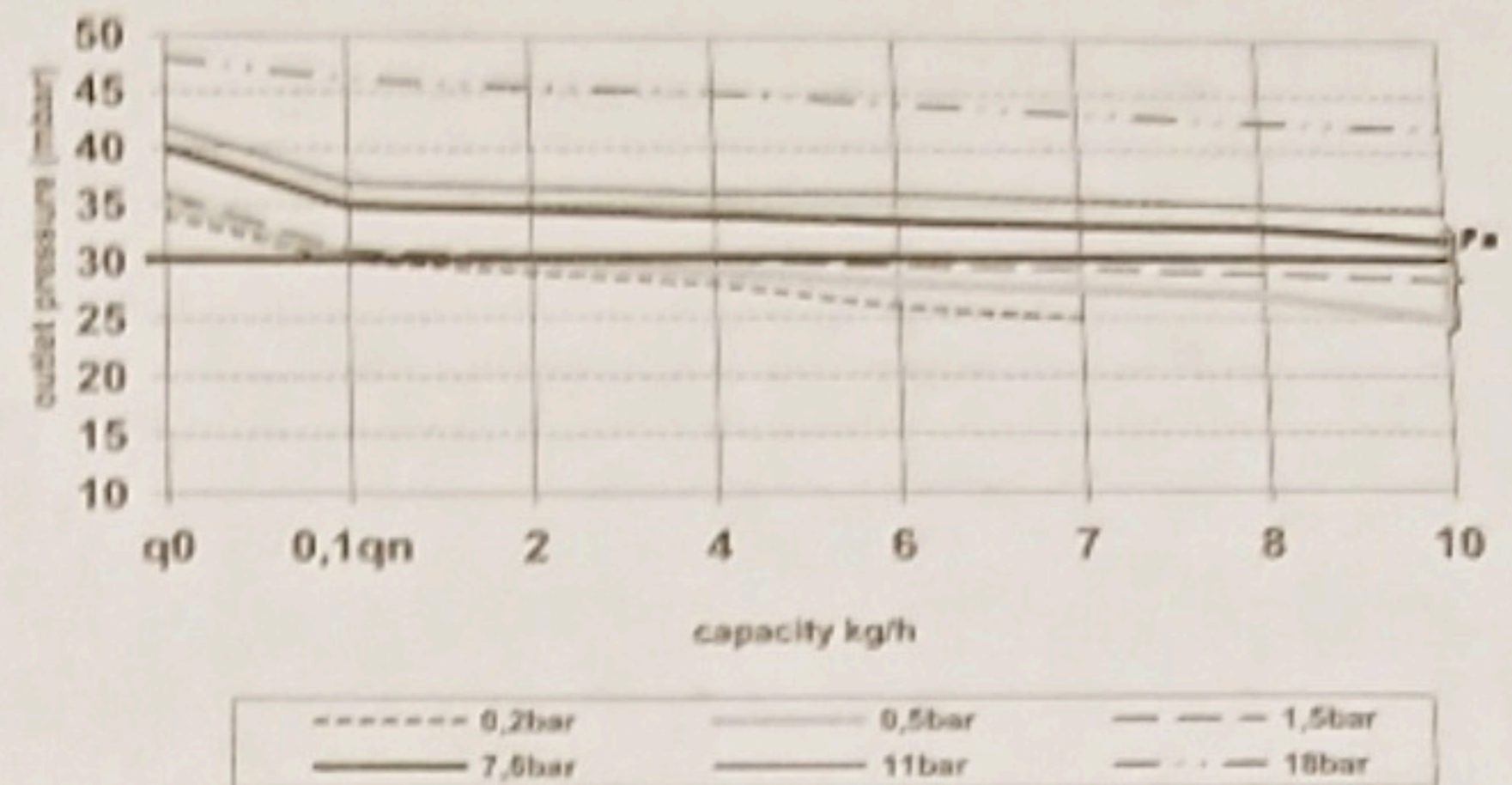
MONDIAL GAS REGULATORS

LOW PRESSURE REGULATOR Mod. LPZ 10
FOR INDUSTRIAL AND DOMESTIC USE

SERIE : LP 300



Reg. LP 10 kg/h mod. LPZ 10 (calibration 30 mbar)
EN 13785



TECHNICAL FEATURES

- PG low pressure regulator for Butane, Propane and their mixtures
- With overpressure relief valve (PRV)
- Capacity : 10 kg/h
- Factory calibration : 30 mbar
- Adjustable from 20 to 50 mbar
- Supply pressure : 0,5 + 11 bar
- Maximum inlet pressure 16 bar
- Working temperature range : -20° + +50° C
- Inlet thread : Female G 1/4" or G 1/2" (or gas bottle connection)
- Outlet thread : Female G 1/2"

HOW TO USE IT

This regulator can be used as 1st or as 2nd stage:

1st stage: the regulator is connected directly to a LPG gas container through its swivel connection (make sure of gasket's presence and its good condition) and, then, supplied from the direct pressure of the gas.

Before starting and operating the system check that there are no leaks in the system connections.

2nd stage: the regulator is connected after a 1st. stage regulator (or an high pressure regulator, or an automatic changeover), which supplies the 2nd stage regulator, generally to a pressure of 1,5 bar.

In these conditions the regulator 2nd stage is supplied with a stabilized pressure variable between 0,5 bar (Min) and 2 bar (Max).

The connection between the 1st stage regulator and the 2nd stage regulator can also be direct, by the use of a threaded nipple.

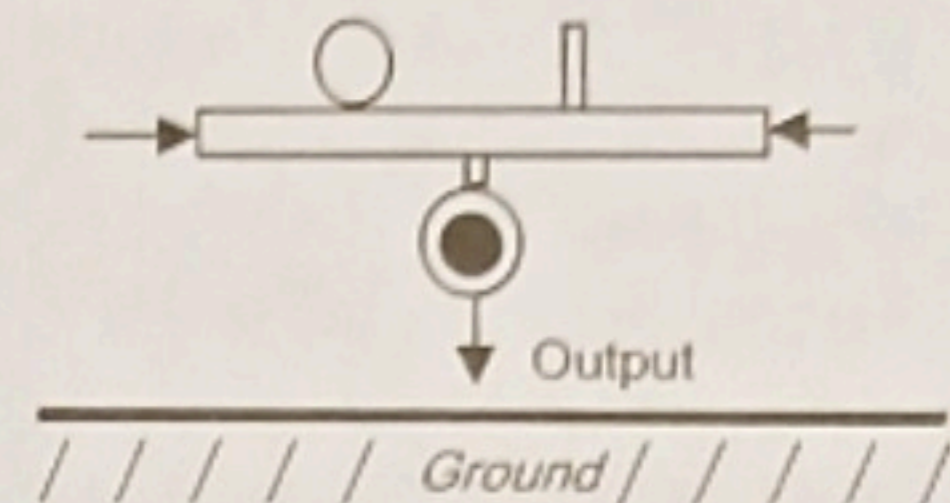
INSTALLATION INSTRUCTIONS

The regulator must be installed by controlling the flow direction (see the arrow). Before starting and operating the system it is important to verify it that is cleaned from any residues (welding, residual filing, etc.) that could damage the regulator or gas appliances.

The check for leaks (in the system connections) must be performed only with specific product (spray foam).

NEVER USE FLAMES !

Make sure that the vent hole in the cover be always clean and free. To avoid possible malfunction of the regulator is recommended vertical installation, with the output facing down.



CALBRATION

The Regulator is calibrated to an outlet pressure of 30 mbar to the capacity of 10 kg/h from the production

If necessary, it is possible to adjust the setting by turning the internal adjustment screw, after removing the protective cap from the cover.

To increase the outlet pressure screw clockwise, to decrease the outlet pressure unscrew counterclockwise.

It is recommended to relocate the protective cap at the end of calibration.

MATERIALS

- Regulator Cover and Body in Zink alloy (Zamak).
- Reg. body protected by galvanic Zinc treatment.
- Reg. cover protected by epoxy powder coating
- NBR rubber components in accordance to EN 549.

NOTES

Upon request, outlet pressures can be customized.

Do not use the regulator to different pressures from those indicated.

Calibration and tightness are verified in production.

The regulator is equipped with a relief valve calibrated at 2,5/3 times the nominal output pressure. If the regulator is installed inside a room or on an underground tank, it is obligatory to connect the vent hole of the cover (thread G 1/8 "F) to a pipe, bring it outside and to protect it from penetration of dirty and water. (To do this, it is also possible to insert a Ø 6mm pipe in the vent cap, after having cut off the top).

Upon request, the regulator can be supplied without a pressure relief valve.

MADE IN ITALY by GNALI BOCIA S.R.L. - Via Brescia, 41 - Lumezzane (BS) - ITALY - Company certified ISO 9001:2008

The manufacturer decline any responsibility for any misuse of the regulator or use under different conditions of that stated in the instructions sheet.



Fotoskanner av Google Foto